

Year 11 Trial Exams 1
Geography Revision
Paper 2

Urban Issues & Challenges



PiXL Independence: Ranking Triangle

Managing Urban Sustainability

Rank the different methods of managing urban sustainability

Think about Freiburg and Curitiba.

Decide what criteria to use – sustainability? Cost? Effectiveness?

Justify your choices.

The most important information goes at the top and then the least important at the bottom.

Make sure you justify WHY you think it the most/least important.





PiXL Independence: Thinking Hard Model

Temple Quarter Regeneration Case Study (Bristol)

Location

Central Bristol on the north bank of the River Avon. Main roads such as A4044 and A4 run through it.

Historical background & need for regeneration:

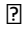


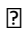
Former industrial area but now very run down. Temple Meads railway station built in 1841. 40% of land covered by railway sidings. Also contains a 'floating harbour' and feeder canals. Cut through by dual carriageway called Temple Gate. Factories have closed and warehouses no longer being used. Site of dereliction.

Temple Quarter Regeneration Scheme

Bristol Temple Quarter, one of the largest urban regeneration projects in the UK, is set right in the heart of Bristol. With Bristol Temple Meads at its core, it is already home to rapidly growing clusters of small and start-up businesses, particularly in the creative, digital and hi-tech sectors.

The 70 hectare site was officially declared open for business by the Chancellor in April 2012, and the project will last for 25 years. There are several key sites in the enterprise zone, and a Spatial Framework has been created, illustrating how it might be developed over its life span.

The project is being delivered by four key partners:

-  the West of England Local Enterprise Partnership, which is tasked with creating 95,000 jobs in the region by 2030
-  Bristol City Council, the local authority with planning responsibility for the Zone
-  the Homes and Communities Agency (HCA), which owns several sites in the Zone
-  Network Rail, who are responsible for Temple Meads railway station, a crucial part of the development

Aims:

The Bristol Temple Quarter aims to attract 4,000 jobs by 2017 and around 17,000 over the 25 year lifespan of the project. In 2015, the 2,000 jobs mark was reached and over 300 businesses are already in the Zone, including prestigious Top 50 law firm Burges Salmon, IBM, Osborne Clarke, the Real Adventure Company and Kevin McCloud's HAB Housing.

Enterprise Zone:

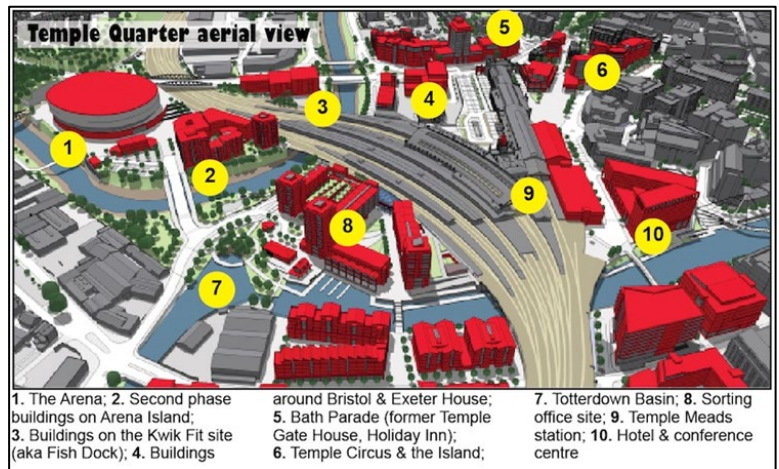
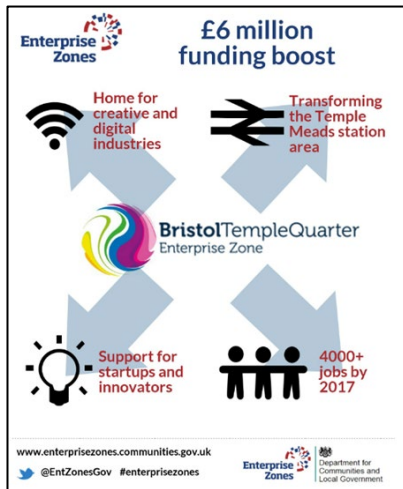
Enterprise zone was set up by the government to drive local growth and create jobs. They offered a range of incentives to businesses, such as business rates relief, simplified planning and superfast broadband. They also offer benefits to the communities surrounding them by consolidating infrastructure, attracting business and creating jobs. They aim to create 4000+ jobs by 2020.

Brunel's Engine Shed:

Example of the re-use of a listed historic building, £1.7 million Innovation Centre being developed in Isambard Kingdom Brunel's historic engine shed at Temple Meads station. Home to high-tech, creative & low-carbon sector companies. Adds to Bristol's importance as a major UK high-tech centre. Includes: 18 micro-electronics, media & digital production companies, further 44 companies who use the facilities such as a company developing the next generation of wi-fi, use of superfast broadband as part of the Bristol Gigabit project.

Success?

- Economically: Engine Shed – new businesses & jobs, Temple Studios – new digital & technical enterprises
- Environmentally: low carbon businesses at Engine shed, improved general environment
- Socially: leisure facilities at Bristol Arena, communities revitalised





PiXL Independence: Thinking Hard Model

Temple Quarter Regeneration Case Study (Bristol)

Take the text and do the following:

- 1) Prioritise: Underline the three most important sentences and write them here. Rank 1-3, briefly explain number 1. Cross out the least important sentence

- 2) Reduce: Reduce the key information into 12 words

- 3) Transform: Transform this information into 4 pictures or images (no words allowed)

- 4) Categorise: Sort this information into three categories. Highlight and think of a suitable title for each category.

- 5) Extend: Write down three questions you'd like to ask an expert in this subject.



PiXL Independence: 'Boxing Up' Activity

Social & Economic Challenges in Rio

Read the text and then put your thoughts in to different boxes so that you have 'boxed up' the text.

Box 1 – 3 things I did not know

Box 2 – 3 things I understand better now

Box 3 – 3 things I already knew

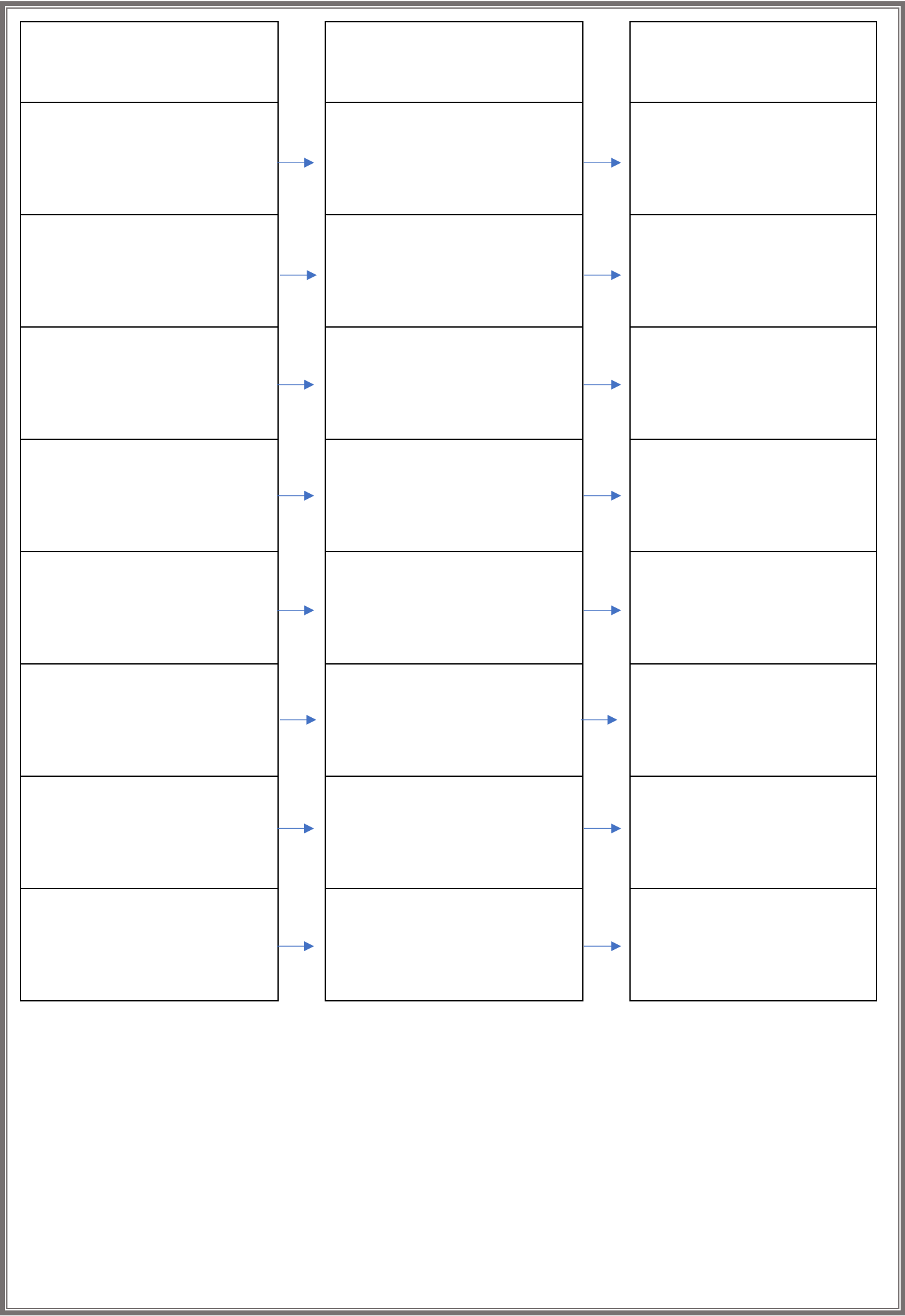
Box 4 – 3 things I need to research further

Box 5 – 3 methods of dealing with these challenges



When you read any text, you should be asking it questions NOT just letting it wash over you.
Read your text and pause and ask it questions e.g. 'what do you mean when you say '....'?'

[illegible]





PiXL Independence: Quizzing

Case study – Bristol – Economic, social & environmental opportunities

Read the text and come up with 20 questions to ask someone about the text.

Swap with a partner and answer their questions.

Mark the answers.

	Question	Answer
1		
2		
3		
4		
5		
6		
7		
8		
9		
10		
11		
12		

13		
14		
15		
16		
17		
18		
19		
20		



PiXL Independence: Transforming

Urbanisation & Megacities

Turn the material you have read into up to 6 pictures – one per paragraph or one per key piece of information. The pictures must represent the information so that they can act as a reminder of what the text said. Underneath each picture, explain your thinking.

1.

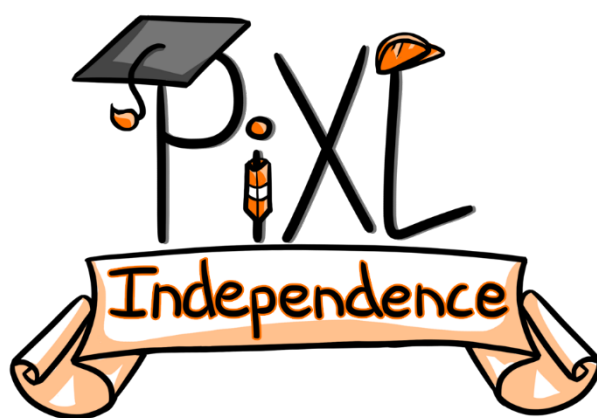
2.

3.

4.

5.

6.



Commissioned by The PiXL Club Ltd.

This resource is strictly for the use of member schools for as long as they remain members of The PiXL Club. It may not be copied, sold, or transferred to a third party or used by the school after membership ceases. Until such time it may be freely used within the member school.

All opinions and contributions are those of the authors. The contents of this resource are not connected with, or endorsed by, any other company, organisation or institution.

PiXL Club Ltd endeavour to trace and contact copyright owners. If there are any inadvertent omissions or errors in the acknowledgements or usage, this is unintended and PiXL will remedy these on written notification.